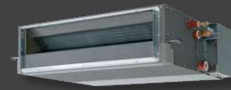


HITACHI

# MultiZone Reverse Cycle Systems

Cooling & Heating



# Creating truly comfortable living spaces.

Multi split systems allow an outdoor unit to be connected to multiple indoor units and therefore cool or heat multiple rooms. Each indoor unit can be managed independently of each other to provide perfect comfort in every room.



WIDE AMBIENT OPERATING RANGE  
-15°C IN WINTER  
46°C IN SUMMER



UP TO FIVE INDOOR  
UNITS CONNECTIBLE

R32  
REFRIGERANT

LOW GWP  
REFRIGERANT



5 YEAR  
WARRANTY



INDIVIDUAL  
CONTROL



COOLING &  
HEATING



AUTO  
RESTART



HIBERNATE



WIFI APP



# Zone Control that's Fast and Efficient

Created with high efficiency in mind, Our MultiZone systems deliver cost effective comfort for your home.

- Compatibility with a range of indoor unit types such as wall mounted, ceiling cassette or ducted.
- The ability to improve aesthetics through the use of minimal outdoor units.
- Ease of operation via a user-friendly controller, which also facilitates easy and fast servicing by accurately displaying the status of all performance parameters.
- Optional remote for on/off function that enables automatic deactivation once a room becomes unoccupied.
- High durability, made possible by anti-corrosion and anti-dust coatings on the outer heat exchanger.

## How to Choose Well?

### 1. Personalise your installation and connect up to 5 units with a single outdoor group.

The installation of a Multi-Split system consists of an external outdoor unit and 2 - 5 indoor units.

### 2. Choose the right interior unit for your home.

A wide range of indoor unit types allows you to select the units to suit the aesthetics and physical constraints of your home.





## Flexibility in design

Hitachi MultiZone systems enable you to choose from a range of indoor unit types. You can select the temperature for each area, helping you create the perfect harmonious living environment.



1. Outdoor Unit



2. Indoor Unit #1



3. Indoor Unit #2



4. Indoor Unit #3



5. Controller

# Wall-Mounted

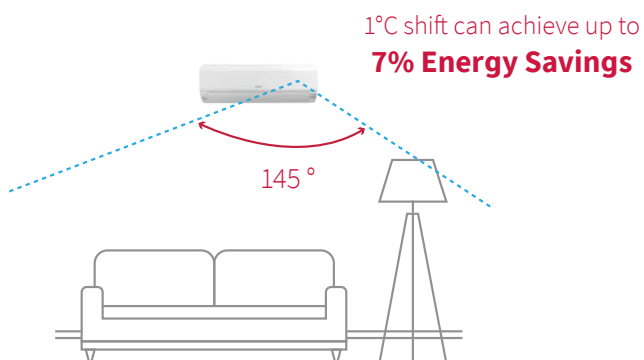


## Efficient Performance

### MOTION DETECT MODE

The sensor detects human movement when someone is in the room. When there is no movement for 20 minutes the set temperature shifts to save you power. If there is no motion detection after 20 minutes, the set temperature increases one degree when in cooling mode, after 40 minutes with no motion the set temperature will increase another one degree. In heating mode the set temperature will decrease.

### Wide Angle Detection Area

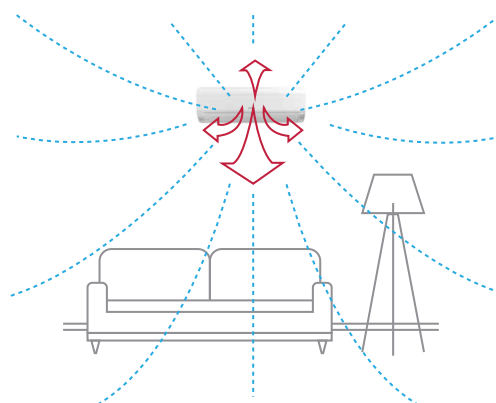


## Unparalleled Comfort

### 4-WAY AUTO DIRECTIONAL 3D AIRFLOW

The louvres not only move up and down automatically, but also left and right. This action disperses air over a much wider range to cool or warm the room efficiently and evenly. With the push of a button louvres can be set in any airflow direction to precisely control your comfort.

### 4-Way 3D Airflow





**RAK-18QXE  
RAK-25~50RXE**



**RAK-15QPE  
RAK-18~50RPE**



**RAK-60RPE**

Premium Design	Standard Design	Standard Design
Motion Sensor	Motion Sensor	N/A
Stainless Steel Pre-Filter	Standard Mesh Pre-Filter	Standard Mesh Pre-Filter
Active Carbon Filter	Active Carbon Filter	Active Carbon Filter

**Active Carbon Air Purifying Filter**



**Stainless Steel Filter**

RAK-15QPE & RAK-18~60RPE have mesh filter

**AIR FILTRATION**

Wall Mounted units, feature our cutting-edge Active Carbon air purifying filter that is proven to effectively capture and neutralise germs, bacteria, allergens, mould and odours.

All indoor units feature a washable pre-filter that absorbs and collects larger dust and pollen particles.

**WHISPER QUIET**

With the newly improved seamless fan control system, Hitachi's air conditioners assure extremely quiet and smooth fan speed changes for even more comfort.

**COMPACT DESIGN**

Standard design wall mount units, up to 5kW, are very compact at only 780mm wide. This enables flexibility when it comes to unit placement.



# Ducted



## CONCEALED UNIT

Subtle vents located throughout a home or office quietly and efficiently deliver conditioned air while maintaining a constant temperature. The unit is easily installed within a ceiling or wardrobe and is ideal for retrofits or new homes.

## STATIC PRESSURE AND AIRFLOW

A highly effective multi-blade centrifugal fan provides efficient yet gentle airflow with minimal sound, even at high speeds.

## BUILT-IN DRAIN PUMP

The unit is equipped with an internal drain pump to remove accumulated condensate from the drain pan during operation. This allows greater installation flexibility.



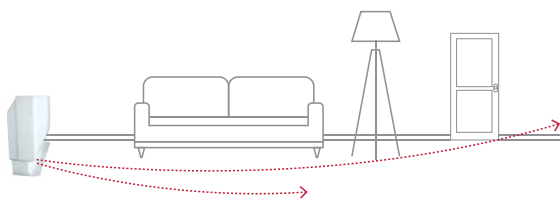
# Floor

## REMOVABLE FOOT

The removable foot of the Floor Console enables the flexibility to install the unit to suit the specific application.

## EXTENDED FUNCTION

In large volumes (rooms in length), this function allows the unit to increase the range of airflow for optimum cooling and heating. Air is discharged at floor level, this ensures optimal comfort in heating mode.





---

# Cassette

## HIGH EFFICIENCY

Discreet and economical, our ceiling-mounted cassettes offer an effective solution for large open-plan areas or rooms with high ceilings.

## QUIET AIRFLOW

These compact cassette units are designed for efficient airflow while minimising sound.

## COMPACT SIZE

The 600mm x 600mm ceiling units fit neatly inside a standard office tile, minimising installation time and rendering them perfect for shop and office applications.

## ONE-TOUCH PANEL

The panel can be swung open up to 90-degrees so that the washable filter can easily be removed for cleaning.

## CONDENSATE DRAIN PUMP

Compact cassettes have inbuilt drain pumps to lift water from the drain pan.



# Controllers



## PREMIUM WIRELESS REMOTE

Comes standard with all wall and floor mounted units

- Weekly timer
- ECO mode
- Powerful mode
- Leave home
- Sleep mode
- Room temperature indication
- Power consumption display

## SPX-WKT3 WIRED CONTROLLER

Optional for all indoor units types



- Weekly timer
- ECO mode
- Powerful mode
- Leave home
- Sleep mode
- Room temperature indication
- Power consumption display
- Backlight display
- Ventilation speed
- Temperature limiting function
- Operation mode lock
- Error history
- Key lock function

## HALF SIZED WIRED CONTROLLER

Optional for all indoor units types



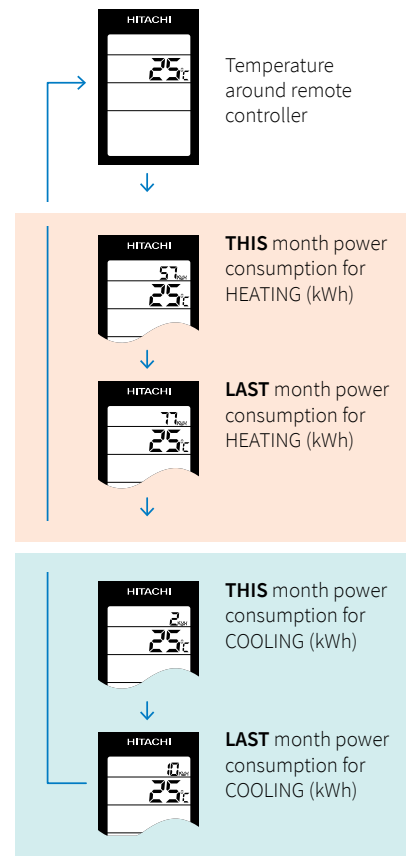
- Room temp indication
- 24 hour timer
- Sleep Mode

## TRACKING POWER CONSUMPTION

The wireless controller enables you to monitor heat pump power usage, ensuring that there are no surprises when the electricity bill arrives.

### Power tracking indication

Press the info button



### POWERFUL MODE

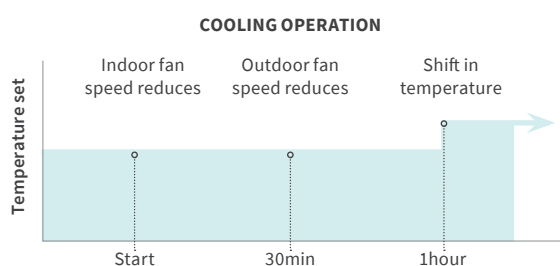
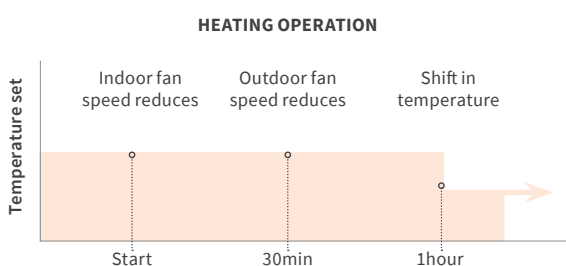
Powerful mode will run your system at maximum cooling or heating as well as maximum fan speed for 20-minutes projecting airflow further and faster to cool or heat a room rapidly.

### ECO MODE

Programmed to run your system at a slightly reduced rate, Eco Mode helps keep your power consumption to a minimum enabling you to achieve significant energy savings.

### SLEEP MODE

A function that adapts fan speed and temperature to provide comfort conditioning while you're sleeping, Sleep Mode also prevents drafts that might disrupt a good night's sleep.



### WEEKLY TIMER FUNCTION\*

Totally eliminating the need to manually control your air conditioner, the Weekly Time Clock function enables you to pre-set your unit to automatically turn on and off or change temperature to suit your weekly routine. The seven-day timer function allows you to set up to six on/off time and temperature settings for each day of the week. You can even pre-set two seven-day schedules (mode A and B) and choose the desired schedule as required (e.g. winter or summer).

### LEAVE HOME FUNCTION

This allows you to pre-set your air conditioner to start automatically if the internal temperature drops to 10°C while you're not at home. Ideal for use in locations that experience very cold conditions, this function can be instrumental in preventing the formation of dampness and mould.

#### Example of a programmed seven day schedule over summer

42 programs for each mode - 84 programs in total.

TIME	MON	TUE	WED	THUR	FRI	SAT	SUN
6:00	1 ON / 23°C	ON / 23°C	ON / 23°C	ON / 23°C	ON / 23°C	1 ON / 23°C	
8:00	2 OFF	OFF	OFF	OFF	OFF	2 OFF	
10:00							
12:00	3 ON / 20°C	ON / 20°C	ON / 20°C	ON / 20°C	ON / 20°C		
14:00	4 OFF	OFF	OFF	OFF	OFF		
16:00							
18:00	5 ON / 20°C	ON / 20°C	ON / 20°C	ON / 20°C	ON / 20°C	3 ON / 20°C	
20:00							
22:00	6 OFF	OFF	OFF	OFF	OFF	4 OFF	

\*Illustration of premium remote weekly timer function.

# airCloud Home

Optional Accessory



Download today



[www.aircloudhome.com](http://www.aircloudhome.com)

## A smarter way to control your air conditioner. Anytime, anywhere.

### CONTROL FROM ANYWHERE

Making sure your home is at the perfect temperature for when you arrive has never been easier. Hitachi airCloud Home allows you to remotely monitor and control your system from a single app through your smartphone.

### CONTROL WITH YOUR VOICE

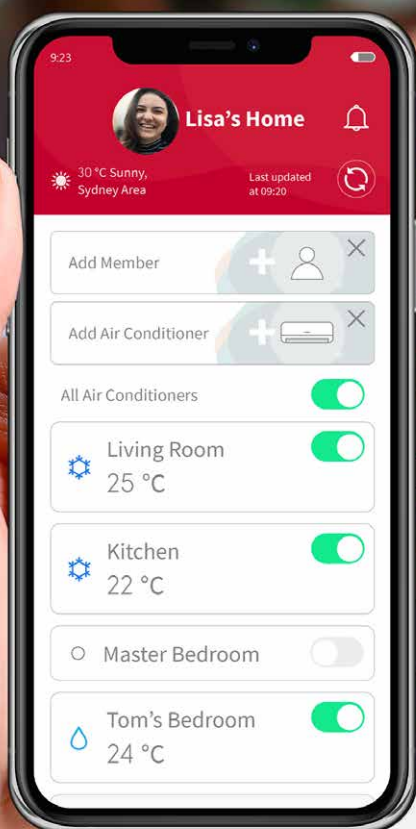
airCloud Home is fully compatible with Amazon Alexa and Google Assistant, enabling you to control your air conditioner hands-free.

### SMART FENCE

Connect your air conditioner to your location and automatically stop and start your AC as you leave and return home.

### AIRCLOUD FEATURES

- On / Off Operation
- ALL Units OFF
- Operation Mode Selectable
- Temperature Adjustment
- Smart Speaker (Google Assistant & Amazon Alexa)
- Smart Fence
- Weekly Scheduling
- On / Off Timer
- Adjustable Louvre
- Fan Speed
- Free firmware updates to latest features
- Unlimited units can be controlled through one app
- Account Management
  - Access for up to 20 users
  - Set up user permissions
- Customer Support
- Personalisation - Indoor unit naming
- Smart Notifications





# Compact Outdoor Units



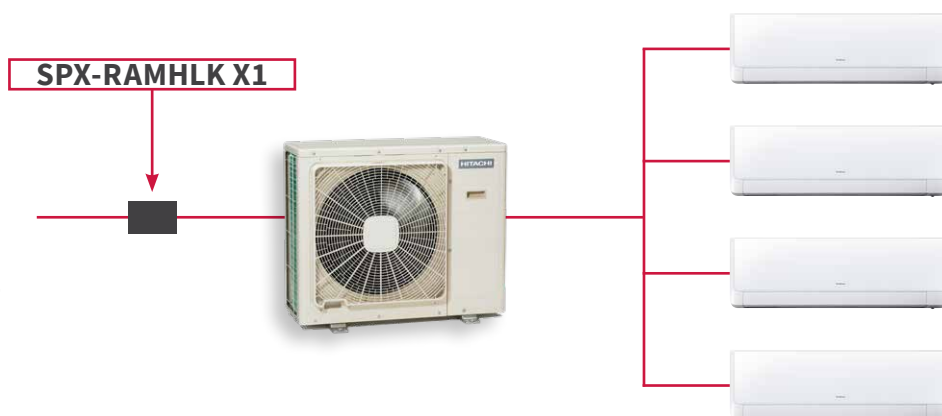
**2 Rooms**  
RAM-53NP2E - 5.3kW

**3~4 Rooms**  
RAM-53NP3E - 5.3kW  
RAM-68NP3E - 6.8kW  
RAM-70NP4E - 7.0kW

**5 Rooms**  
RAM-90NP5E - 8.5kW

## CONNECTIVITY

A single adapter on each system allow connectivity to Hitachi's H-link network. Suitable for commercial applications where multiple selected Hitachi products are required to be centrally controlled.



## HIBERNATE MODE

Hibernate control allows improvement in energy savings by reducing standby power by 70%. This is achieved through the shutdown of non-active components.

## COMPACT

Hitachi MultiZone outdoor units are compact so they are suitable for a wide range of residential and commercial applications where space is at a premium.

## VECTOR CONTROL

Hitachi inverter compressors achieved improved energy savings through vector control which optimises compressor operation for high performance and lower noise levels.

## EXTREME OUTDOOR TEMPERATURE OPERATION

Hitachi air conditioners can operate in outside temperatures down to as low as -15°C and as high as 46°C ensuring you stay comfortable when you need it.

# MultiZone Range Capacities

## YOU'LL FIND THE PERFECT MULTIZONE SOLUTION FOR YOUR HOME

With a wide selection of compact wall & floor mounted units, cassette units and concealed in-the-ceiling ducted units, our MultiZone indoor range caters for all requirements.



### Outdoor unit model

	RAM-53NP2E	RAM-53NP3E	RAM-68NP3E	RAM-70NP4E	RAM-90NP5E
Nom capacity kW Cool / Heat	5.3 / 6.8	5.3 / 6.8	6.8 / 8.5	7.0 / 8.5	8.5 / 10.0
Min / Max Nom Combination kW	3.0 / 8.5	3.0 / 8.8	3.0 / 11.0	3.0 / 11.0	3.0 / 15.5
Max Total Pipe Length (m)	35	60	60	60	75
Max Pipe Length to Individual Indoor (m)	25	25	25	25	25
Height Difference	20	20	20	20	20
Indoor Units Connectible (min / max)	2 / 2	2 / 3	2 / 3	2 / 4	2 / 5

\*see technical data for requirements

### Indoor unit model

	WALL MOUNT PREMIUM	WALL MOUNT STANDARD	FLOOR MOUNT RAF SERIES	DUCTED RAD SERIES	CASSETTE RAI SERIES
<b>Nominal Cooling</b>					
1.5kW		●			
1.8kW	●	●		●	
2.5kW	●	●	●	●	●
3.5kW	●	●	●	●	●
4.2kW		●			
5.0kW	●	●	●	●	●
6.0kW		●		●	●

Note: Systems use R32 refrigerant. Please see product installation manual for the minimum floor area room requirements Amin (m<sup>2</sup>)

# Premium Wall Mounted



RAK-18~50

Model : Indoor Unit	RAK-18QXE	RAK-25RXE	RAK-35RXE	RAK-50RXE
<b>General Specifications</b>				
<b>Capacity</b>				
Nominal Cooling Capacity (kW)	1.8	2.5	3.5	5.0
Nominal Heating Capacity (kW)	2.5	3.2	4.0	5.8
<b>Airflow</b>				
Cooling (l/sec) Hi / Med / Low / Super Low	167 / 142 / 92 / 83	167 / 142 / 92 / 83	183 / 144 / 94 / 89	200 / 161 / 111 / 97
Heating (l/sec) Hi / Med / Low / Super Low	189 / 156 / 103 / 81	189 / 156 / 103 / 81	200 / 158 / 106 / 86	222 / 172 / 117 / 97
<b>Dimensions &amp; Weights</b>				
Dimensions (H x W x D mm)	295 x 900 x 210			
Weight (kg)	11			
Colour	White			
<b>Sound Pressure Level</b>				
Cooling Level dB(A) Hi / Med / Low / Super Low	43 / 35 / 27 / 20	43 / 35 / 27 / 20	45 / 37 / 29 / 22	47 / 39 / 31 / 25
Heating Level dB(A) Hi / Med / Low / Super Low	43 / 36 / 28 / 20	43 / 36 / 28 / 20	45 / 37 / 30 / 22	48 / 39 / 31 / 25
<b>Controller</b>				
Standard	Premium Wireless remote			
Optional	Half Sized Wired / SPX-WKT3			
<b>Installer Specifications</b>				
<b>Installation</b>				
Connections	Flare Nut Connection			
Pipe Connection Sizes: Liquid Ømm / Gas Ømm	6.35 / 9.52		6.35 / 12.7	
Note: Systems use R32 refrigerant. Please see product installation manual for the minimum floor area room requirements Amin (m <sup>2</sup> )				

# Standard Wall Mounted



RAK-15~50

Model : Indoor Unit	RAK-15QPE	RAK-18RPE	RAK-25RPE	RAK-35RPE	RAK-42RPE	RAK-50RPE	RAK-60RPE
---------------------	-----------	-----------	-----------	-----------	-----------	-----------	-----------

## General Specifications

### Capacity

Nominal Cooling Capacity (kW)	1.5	2.0	2.5	3.5	4.2	5.0	6.0
Nominal Heating Capacity (kW)	2.0	2.5	3.4	4.2	5.4	6.0	7.0

### Airflow

Cooling (l/sec) Hi / Med / Low / Super Low	122/111/97/87	122/111/97/87	142/119/103/93	189/135/103/98	200/150/114/98	208/150/114/98	258/192/150/133
Heating (l/sec) Hi / Med / Low / Super Low	133/117/97/87	133/117/97/87	158/139/111/93	217/158/133/101	222/169/139/106	228/169/139/106	292/200/142/133

### Dimensions & Weights

Dimensions (H x W x D mm)	280 x 780 x 230	280 x 780 x 230	280 x 780 x 230	280 x 780 x 230	280 x 780 x 230	280 x 780 x 230	300 x 900 x 230
Weight (kg)	8.5						12
Colour	White						

### Sound Pressure Level

Cooling Level dB(A) Hi / Med / Low / Super Low	34 / 30 / 24 / 20	37 / 33 / 24 / 21	40 / 33 / 24 / 22	43 / 36 / 26 / 25	46 / 39 / 28 / 25	46 / 39 / 28 / 25	48 / 42 / 33 / 30
Heating Level dB(A) Hi / Med / Low / Super Low	35 / 32 / 24 / 20	38 / 33 / 22 / 19	41 / 34 / 23 / 20	44 / 36 / 27 / 26	46 / 39 / 31 / 27	46 / 39 / 31 / 27	49 / 42 / 34 / 33

### Controller

Standard	Premium Wireless remote
Optional	Half Sized Wired / SPX-WKT3

## Installer Specifications

### Installation

Connections	Flare Nut Connection
Pipe Connection Sizes: Liquid Ømm / Gas Ømm	6.35 / 9.52      6.35 / 12.7

Note: Systems use R32 refrigerant. Please see product installation manual for the minimum floor area room requirements Amin (m<sup>2</sup>)



# Ducted Series



RAD-18-35



RAD-50-60

Model : Indoor Unit	RAD-18QPE	RAD-25RPE	RAD-35RPE	RAD-50RPE	RAD-60RPE
<b>General Specifications</b>					
<b>Capacity</b>					
Nominal Cooling Capacity (kW)	1.8	2.5	3.5	5.0	6.0
Nominal Heating capacity (kW)	2.5	3.5	4.8	6.0	7.0
<b>Airflow</b>					
Cooling (l/sec) Hi / Med / Low / Super Low	137 / 122 / 103 / 92	142 / 125 / 108 / 92		317 / 222 / 150 / 97	
Heating (l/sec) Hi / Med / Low / Super Low	153 / 125 / 103 / 92	142 / 125 / 108 / 92		317 / 222 / 150 / 97	
<b>Dimensions &amp; Weights</b>					
Dimensions (H x W x D mm)	235 x 750 x 400			270 x 900 x 720	
Weight (kg)	16			35	
<b>Supply Air</b>					
Height (mm)	151			219.2	
Width (mm)	638			804	
<b>Return Air Back</b>					
Height (mm)	175			221	
Width (mm)	614			814	
<b>Return Air Bottom</b>					
Height (mm)	174			-	-
Width (mm)	614			-	-
<b>Sound Pressure Level</b>					
Cooling Level dB(A) Hi / Med / Low / Super Low	36 / 34 / 31 / 29	41 / 37 / 33 / 30		39 / 35 / 32 / 29	
Heating Level dB(A) Hi / Med / Low / Super Low	37 / 33 / 30 / 27	42 / 38 / 34 / 30		40 / 35 / 32 / 29	
<b>Controller</b>					
Optional	Half Sized Wired / SPX-WKT3				
<b>Installer Specifications</b>					
<b>Installation</b>					
Pipe Connection Sizes: Liquid Ømm / Gas Ømm	6.35 / 9.52			6.35 / 12.7	
Supplied Drain Pump pressure lift (mm)	150			300	

Note: Systems use R32 refrigerant. Please see product installation manual for the minimum floor area room requirements Amin (m<sup>2</sup>)

# 4 Way Cassette Series



RAF-25-60

Model : Indoor Unit	RAI-25RPE	RAI-35RPE	RAI-50RPE	RAI-60RPE
<b>General Specifications</b>				
<b>Capacity</b>				
Nominal Cooling Capacity (kW)	2.5	3.5	5.0	6.0
Nominal Heating capacity (kW)	3.5	4.8	6.0	7.0
<b>Airflow</b>				
Cooling (l/sec) Hi / Med / Low / Super Low	183 / 164 / 140 / 100	183 / 164 / 140 / 100	200 / 175 / 150 / 108	200 / 175 / 150 / 108
Heating (l/sec) Hi / Med / Low / Super Low	200 / 175 / 150 / 123	200 / 175 / 150 / 123	217 / 192 / 167 / 125	217 / 192 / 167 / 125
<b>Dimensions &amp; Weights</b>				
Dimensions (H x W x D mm)	285 x 570 x 570			
Weight (kg)	17			
Adaptable Air Panel Model (Facia Panel)	P-AP56NAMS			
Panel Size (mm) (H x W x Dmm)	30 x 620 x 620			
Panel Weight (kg)	2.8			
Colour	White			
<b>Sound Pressure Level</b>				
Cooling Hi / Med / Low / Super Low	38 / 35 / 31 / 27	40 / 37 / 33 / 27	43 / 39 / 35 / 29	43 / 39 / 35 / 29
Heating Hi / Med / Low / Super Low	39 / 36 / 32 / 28	41 / 38 / 34 / 28	44 / 40 / 36 / 30	44 / 40 / 36 / 30
<b>Controller</b>				
Optional	Half Sized Wired / SPX-WKT3			
<b>Installer Specifications</b>				
<b>Installation Connections</b>				
Pipe Connection Sizes: Liquid Ømm / Gas Ømm	6.35 / 9.53		6.35 / 12.7	
Supplied Drain Pump pressure lift (mm)	115			

Note: Systems use R32 refrigerant. Please see product installation manual for the minimum floor area room requirements Amin (m<sup>2</sup>)



RAF-25~50

# Floor Mounted Series

Model : Indoor Unit	RAF-25RXE	RAF-35RXE	RAF-50RXE
---------------------	-----------	-----------	-----------

## General Specifications

### Capacity

Nominal Cooling Capacity (kW)	2.5	3.5	5.0
Nominal Heating capacity (kW)	3.4	4.5	6.0

### Airflow

Cooling (l/sec) Hi / Med / Low / Super Low	175 / 142 / 108 / 75	175 / 142 / 108 / 75	194 / 150 / 125 / 83
Heating (l/sec) Hi / Med / Low / Super Low	183 / 150 / 117 / 83	183 / 150 / 117 / 83	203 / 158 / 133 / 92

### Dimensions & Weights

Dimensions (H x W x D mm)	750 x 590 x 215		
Weight (kg)	15		
Colour	Shadow White		

### Sound Pressure Level

Cooling Hi / Med / Low / Super Low	38 / 31 / 26 / 20	39 / 31 / 26 / 20	43 / 36 / 29 / 22
Heating Hi / Med / Low / Super Low	38 / 31 / 26 / 20	39 / 31 / 26 / 20	44 / 36 / 29 / 22

### Controller

Standard	Premium Wireless remote		
Optional	Half Sized Wired / SPX-WKT3		

## Installer Specifications

### Installation Connections

Pipe Connection Sizes: Liquid Ømm / Gas Ømm	6.35 / 9.53	6.35 / 12.7
--	-------------	-------------

Note: Systems use R32 refrigerant. Please see product installation manual for the minimum floor area room requirements Amin (m<sup>2</sup>)

# Outdoor Units

Model : Outdoor Unit	RAM-53NP2E	RAM-53NP3E	RAM-68NP3E	RAM-70NP4E	RAM-90NP5E
<b>General Specifications</b>					
Cooling Capacity (kW)	5.3	5.3	6.8	7.0	8.5
Cooling Capacity Range (kW)	1.5 - 6.6	1.5 - 6.6	2.4 - 8.0	2.4 - 8.8	1.5 - 9.5
Heating Capacity (kW)	6.8	6.8	8.5	8.5	10.0
Heating Capacity Range (kW)	1.5 - 7.2	1.5 - 7.2	2.4 - 9.5	2.6 - 9.5	1.5 - 11.5
EER / AEER	4.20 / 4.17	4.10 / 4.08	3.71 / 3.70	3.70 / 3.68	3.40 / 3.39
COP / ACOP	4.22 / 4.20	4.20 / 4.20	4.00 / 3.99	4.20 / 4.19	3.90 / 3.89
No. Of Indoor Units (Min / Max)	2 / 2	2 / 3	2 / 3	2 / 4	2 / 5
Dimensions (H x W x D mm)	750 x 850 x 298	800 x 850 x 298		800 x 950 x 370	
Weight kg	53	54	58		71
Sound Pressure level dB(a) Cool / Heat	50 / 51		50 / 53		53 / 56
Sound Power dB(a)	61		63		66
Working range - Cooling (°C)	-10° / 46°				
Working range - Heating (°C)	-15° / 24°				

Rated capacity measured in accordance with AS/NZS 3823.2:2013

AEER / ACOP [AS/NZS 3823.2:2013]

Note: Systems use R32 refrigerant. Please see product installation manual for the minimum floor area room requirements Amin (m<sup>2</sup>)





Model : Outdoor Unit	RAM-53NP2E	RAM-53NP3E	RAM-68NP3E	RAM-70NP4E	RAM-90NP5E
<b>Installer Specifications</b>					
Piping Diameter Liquid Ømm	6.35 x 2	6.35 x 3	6.35 x 3	6.35 x 4	6.35 x 5
Piping Diameter Gas Ømm	9.52 x 2	9.52 x 3	9.52 x 3	9.52 x 3 + 12.7 x 1	9.52 x 3 + 12.7 x 2
Refrigerant	R 32				
Max Total Pipe Length (m)	35	60	60	60	75
Max Pipe Length to Individual Indoor unit (m)	25	25	25	25	25
Number of Circuits	1				
Max Pre Charged Length (m)	35	35	30	30	35
Max Pipe Lift (m)	20				
Min. pipe Length per indoor (m)	3				
Compressor Type	2-cylinder rotary				
Power Supply	220-240V/1ph/ 50/60Hz				
Run Current - Cooling / Heating (220-240V)	5.79-5.31 / 7.39-6.78	5.92-5.43 / 7.39-6.78	8.40-7.70 / 9.73-8.92	8.68-7.95 / 9.27-8.50	11.48-10.52 / 11.75-10.79

Rated capacity measured in accordance with AS/NZS 3823.2:2013  
AEER / ACOP [AS/NZS 3823.2:2013]

Note: Systems use R32 refrigerant. Please see product installation manual for the minimum floor area room requirements Amin (m²)

# MultiZone Combinations

Model : Outdoor Unit	RAM-53NP2E	RAM-53NP3E	RAM-68NP3E	RAM-70NP4E	RAM-90NP5E
Cooling Capacity (kW)	5.3	5.3	6.8	7.0	8.5
<b>Two Units</b>					
1.5 + 1.5	•	•	•	•	•
1.5 + 1.8	•	•	•	•	•
1.5 + 2.5	•	•	•	•	•
1.5 + 3.5	•	•	•	•	•
1.5 + 4.2	•	•	•	•	•
1.5 + 5.0	•	•	•	•	•
1.5 + 6.0	•	•	•	•	•
1.8 + 1.8	•	•	•	•	•
1.8 + 2.5	•	•	•	•	•
1.8 + 3.5	•	•	•	•	•
1.8 + 4.2	•	•	•	•	•
1.8 + 5.0	•	•	•	•	•
1.8 + 6.0	•	•	•	•	•
2.5 + 2.5	•	•	•	•	•
2.5 + 3.5	•	•	•	•	•
2.5 + 4.2	•	•	•	•	•
2.5 + 5.0	•	•	•	•	•
2.5 + 6.0	•	•	•	•	•
3.5 + 3.5	•	•	•	•	•
3.5 + 4.2	•	•	•	•	•
3.5 + 5.0	•	•	•	•	•
3.5 + 6.0	•	•	•	•	•
4.2 + 4.2	•	•	•	•	•
4.2 + 5.0			•	•	•
4.2 + 6.0			•	•	•
5.0 + 5.0			•	•	•
5.0 + 6.0			•	•	•
6.0 + 6.0					•
<b>Three Units</b>					
1.5 + 1.5 + 1.5		•	•	•	•
1.5 + 1.5 + 1.8		•	•	•	•
1.5 + 1.5 + 2.5		•	•	•	•
1.5 + 1.5 + 3.5		•	•	•	•
1.5 + 1.5 + 4.2		•	•	•	•
1.5 + 1.5 + 5.0		•	•	•	•
1.5 + 1.5 + 6.0		•	•	•	•
1.5 + 1.8 + 1.8		•	•	•	•
1.5 + 1.8 + 2.5		•	•	•	•
1.5 + 1.8 + 3.5		•	•	•	•
1.5 + 1.8 + 4.2		•	•	•	•
1.5 + 1.8 + 5.0		•	•	•	•
1.5 + 1.8 + 6.0		•	•	•	•
1.5 + 2.5 + 2.5		•	•	•	•
1.5 + 2.5 + 3.5		•	•	•	•
1.5 + 2.5 + 4.2		•	•	•	•
1.5 + 2.5 + 5.0		•	•	•	•
1.5 + 2.5 + 6.0		•	•	•	•
1.5 + 3.5 + 3.5		•	•	•	•
1.5 + 3.5 + 4.2		•	•	•	•
1.5 + 3.5 + 5.0		•	•	•	•
1.5 + 3.5 + 6.0		•	•	•	•
1.5 + 4.2 + 4.2		•	•	•	•
1.5 + 4.2 + 5.0		•	•	•	•
1.5 + 4.2 + 6.0		•	•	•	•
1.5 + 5.0 + 5.0		•	•	•	•
1.5 + 5.0 + 6.0		•	•	•	•
1.5 + 6.0 + 6.0		•	•	•	•
1.8 + 1.8 + 1.8		•	•	•	•
1.8 + 1.8 + 2.5		•	•	•	•
1.8 + 1.8 + 3.5		•	•	•	•

# MultiZone Combinations

Model : Outdoor Unit	RAM-53NP2E	RAM-53NP3E	RAM-68NP3E	RAM-70NP4E	RAM-90NP5E
Cooling Capacity (kW)	5.3	5.3	6.8	7.0	8.5
<b>Three Units Cont.</b>					
1.8+1.8+4.2		•	•	•	•
1.8+1.8+5.0		•	•	•	•
1.8+1.8+6.0			•	•	•
1.8+2.5+2.5		•	•	•	•
1.8+2.5+3.5		•	•	•	•
1.8+2.5+4.2		•	•	•	•
1.8+2.5+5.0			•	•	•
1.8+2.5+6.0			•	•	•
1.8+3.5+3.5		•	•	•	•
1.8+3.5+4.2			•	•	•
1.8+3.5+5.0			•	•	•
1.8+3.5+6.0					•
1.8+4.2+4.2			•	•	•
1.8+4.2+5.0			•	•	•
1.8+4.2+6.0					•
1.8+5.0+5.0					•
1.8+5.0+6.0					•
1.8+6.0+6.0					•
2.5+2.5+2.5		•	•	•	•
2.5+2.5+3.5		•	•	•	•
2.5+2.5+4.2			•	•	•
2.5+2.5+5.0			•	•	•
2.5+2.5+6.0			•	•	•
2.5+3.5+3.5			•	•	•
2.5+3.5+4.2			•	•	•
2.5+3.5+5.0			•	•	•
2.5+3.5+6.0					•
2.5+4.2+4.2			•	•	•
2.5+4.2+5.0					•
2.5+4.2+6.0					•
2.5+5.0+5.0					•
2.5+5.0+6.0					•
2.5+6.0+6.0					•
3.5+3.5+3.5			•	•	•
3.5+3.5+4.2					•
3.5+3.5+5.0					•
3.5+3.5+6.0					•
3.5+4.2+4.2					•
3.5+4.2+5.0					•
3.5+4.2+6.0					•
3.5+5.0+5.0					•
3.5+5.0+6.0					•
3.5+6.0+6.0					•
4.2+4.2+4.2					•
4.2+4.2+5.0					•
4.2+4.2+6.0					•
4.2+5.0+5.0					•
4.2+5.0+6.0					•
5.0+5.0+5.0					•

# MultiZone Combinations

Model : Outdoor Unit	RAM-70NP4E	RAM-90NP5E
Cooling Capacity (kW)	7.0	8.5
<b>Four Units</b>		
1.5+1.5+1.5+1.5	•	•
1.5+1.5+1.5+1.8	•	•
1.5+1.5+1.5+2.5	•	•
1.5+1.5+1.5+3.5	•	•
1.5+1.5+1.5+4.2	•	•
1.5+1.5+1.5+5.0	•	•
1.5+1.5+1.5+6.0	•	•
1.5+1.5+1.8+1.8	•	•
1.5+1.5+1.8+2.5	•	•
1.5+1.5+1.8+3.5	•	•
1.5+1.5+1.8+4.2	•	•
1.5+1.5+1.8+5.0	•	•
1.5+1.5+1.8+6.0	•	•
1.5+1.5+2.5+2.5	•	•
1.5+1.5+2.5+3.5	•	•
1.5+1.5+2.5+4.2	•	•
1.5+1.5+2.5+5.0	•	•
1.5+1.5+2.5+6.0	•	•
1.5+1.5+3.5+3.5	•	•
1.5+1.5+3.5+4.2	•	•
1.5+1.5+3.5+5.0	•	•
1.5+1.5+3.5+6.0	•	•
1.5+1.5+4.2+4.2	•	•
1.5+1.5+4.2+5.0	•	•
1.5+1.5+4.2+6.0	•	•
1.5+1.5+5.0+5.0	•	•
1.5+1.5+5.0+6.0	•	•
1.5+1.5+6.0+6.0	•	•
1.5+1.8+1.8+1.8	•	•
1.5+1.8+1.8+2.5	•	•
1.5+1.8+1.8+3.5	•	•
1.5+1.8+1.8+4.2	•	•
1.5+1.8+1.8+5.0	•	•
1.5+1.8+1.8+6.0	•	•
1.5+1.8+2.5+2.5	•	•
1.5+1.8+2.5+3.5	•	•
1.5+1.8+2.5+4.2	•	•
1.5+1.8+2.5+5.0	•	•
1.5+1.8+2.5+6.0	•	•
1.5+1.8+3.5+3.5	•	•
1.5+1.8+3.5+4.2	•	•
1.5+1.8+3.5+5.0	•	•
1.5+1.8+3.5+6.0	•	•
1.5+1.8+4.2+4.2	•	•
1.5+1.8+4.2+5.0	•	•
1.5+1.8+4.2+6.0	•	•
1.5+1.8+5.0+5.0	•	•

Model : Outdoor Unit	RAM-70NP4E	RAM-90NP5E
Cooling Capacity (kW)	7.0	8.5
<b>Four Units Cont.</b>		
1.5+1.8+5.0+6.0		•
1.5+1.8+6.0+6.0		•
1.5+2.5+2.5+2.5	•	•
1.5+2.5+2.5+3.5	•	•
1.5+2.5+2.5+4.2	•	•
1.5+2.5+2.5+5.0		•
1.5+2.5+2.5+6.0		•
1.5+2.5+3.5+3.5	•	•
1.5+2.5+3.5+4.2		•
1.5+2.5+3.5+5.0		•
1.5+2.5+3.5+6.0		•
1.5+2.5+4.2+4.2		•
1.5+2.5+4.2+5.0		•
1.5+2.5+4.2+6.0		•
1.5+2.5+5.0+5.0		•
1.5+2.5+5.0+6.0		•
1.5+3.5+3.5+3.5		•
1.5+3.5+3.5+4.2		•
1.5+3.5+3.5+5.0		•
1.5+3.5+3.5+6.0		•
1.5+3.5+4.2+4.2		•
1.5+3.5+4.2+5.0		•
1.5+3.5+4.2+6.0		•
1.5+3.5+5.0+5.0		•
1.5+4.2+4.2+4.2		•
1.5+4.2+4.2+5.0		•
1.8+1.8+1.8+1.8	•	•
1.8+1.8+1.8+2.5	•	•
1.8+1.8+1.8+3.5	•	•
1.8+1.8+1.8+4.2	•	•
1.8+1.8+1.8+5.0	•	•
1.8+1.8+1.8+6.0		•
1.8+1.8+2.5+2.5	•	•
1.8+1.8+2.5+3.5	•	•
1.8+1.8+2.5+4.2	•	•
1.8+1.8+2.5+5.0		•
1.8+1.8+2.5+6.0		•
1.8+1.8+3.5+3.5	•	•
1.8+1.8+3.5+4.2		•
1.8+1.8+3.5+5.0		•
1.8+1.8+3.5+6.0		•
1.8+1.8+4.2+4.2		•
1.8+1.8+4.2+5.0		•
1.8+1.8+4.2+6.0		•
1.8+1.8+5.0+5.0		•
1.8+1.8+5.0+6.0		•



# MultiZone Combinations

Model : Outdoor Unit	RAM-70NP4E	RAM-90NP5E
Cooling Capacity (kW)	7.0	8.5
<b>Four Units Cont.</b>		
1.8+2.5+2.5+2.5	•	•
1.8+2.5+2.5+3.5	•	•
1.8+2.5+2.5+4.2	•	•
1.8+2.5+2.5+5.0		•
1.8+2.5+2.5+6.0		•
1.8+2.5+3.5+3.5		•
1.8+2.5+3.5+4.2		•
1.8+2.5+3.5+5.0		•
1.8+2.5+3.5+6.0		•
1.8+2.5+4.2+4.2		•
1.8+2.5+4.2+5.0		•
1.8+2.5+4.2+6.0		•
1.8+2.5+5.0+5.0		•
1.8+2.5+5.0+6.0		•
1.8+3.5+3.5+3.5		•
1.8+3.5+3.5+4.2		•
1.8+3.5+3.5+5.0		•
1.8+3.5+3.5+6.0		•
1.8+3.5+4.2+4.2		•
1.8+3.5+4.2+5.0		•
1.8+3.5+4.2+6.0		•
1.8+3.5+5.0+5.0		•
1.8+4.2+4.2+4.2		•
1.8+4.2+4.2+5.0		•
2.5+2.5+2.5+2.5	•	•
2.5+2.5+2.5+3.5	•	•
2.5+2.5+2.5+4.2		•
2.5+2.5+2.5+5.0		•
2.5+2.5+2.5+6.0		•
2.5+2.5+3.5+3.5		•
2.5+2.5+3.5+4.2		•
2.5+2.5+3.5+5.0		•
2.5+2.5+3.5+6.0		•
2.5+2.5+4.2+4.2		•
2.5+2.5+4.2+5.0		•
2.5+2.5+4.2+6.0		•
2.5+2.5+5.0+5.0		•
2.5+3.5+3.5+3.5		•
2.5+3.5+3.5+4.2		•
2.5+3.5+3.5+5.0		•
2.5+3.5+3.5+6.0		•
2.5+3.5+4.2+4.2		•
2.5+3.5+4.2+5.0		•
2.5+4.2+4.2+4.2		•
3.5+3.5+3.5+3.5		•
3.5+3.5+3.5+4.2		•
3.5+3.5+3.5+5.0		•
3.5+3.5+4.2+4.2		•

# MultiZone Combinations

Model : Outdoor Unit	RAM-90NP5E
Cooling Capacity (kW)	8.5
<b>Five Units</b>	
1.5+1.5+1.5+1.5+1.5	•
1.5+1.5+1.5+1.5+1.8	•
1.5+1.5+1.5+1.5+2.5	•
1.5+1.5+1.5+1.5+3.5	•
1.5+1.5+1.5+1.5+4.2	•
1.5+1.5+1.5+1.5+5.0	•
1.5+1.5+1.5+1.5+6.0	•
1.5+1.5+1.5+1.8+1.8	•
1.5+1.5+1.5+1.8+2.5	•
1.5+1.5+1.5+1.8+3.5	•
1.5+1.5+1.5+1.8+4.2	•
1.5+1.5+1.5+1.8+5.0	•
1.5+1.5+1.5+1.8+6.0	•
1.5+1.5+1.5+2.5+2.5	•
1.5+1.5+1.5+2.5+3.5	•
1.5+1.5+1.5+2.5+4.2	•
1.5+1.5+1.5+2.5+5.0	•
1.5+1.5+1.5+2.5+6.0	•
1.5+1.5+1.5+3.5+3.5	•
1.5+1.5+1.5+3.5+4.2	•
1.5+1.5+1.5+3.5+5.0	•
1.5+1.5+1.5+3.5+6.0	•
1.5+1.5+1.5+4.2+4.2	•
1.5+1.5+1.5+4.2+5.0	•
1.5+1.5+1.5+4.2+6.0	•
1.5+1.5+1.5+5.0+5.0	•
1.5+1.5+1.5+5.0+6.0	•
1.5+1.5+1.8+1.8+1.8	•
1.5+1.5+1.8+1.8+2.5	•
1.5+1.5+1.8+1.8+3.5	•
1.5+1.5+1.8+1.8+4.2	•
1.5+1.5+1.8+1.8+5.0	•
1.5+1.5+1.8+1.8+6.0	•
1.5+1.5+1.8+2.5+2.5	•
1.5+1.5+1.8+2.5+3.5	•
1.5+1.5+1.8+2.5+4.2	•
1.5+1.5+1.8+2.5+5.0	•
1.5+1.5+1.8+2.5+6.0	•
1.5+1.5+1.8+3.5+3.5	•
1.5+1.5+1.8+3.5+4.2	•
1.5+1.5+1.8+3.5+5.0	•
1.5+1.5+1.8+3.5+6.0	•
1.5+1.5+1.8+4.2+4.2	•
1.5+1.5+1.8+4.2+5.0	•
1.5+1.5+1.8+4.2+6.0	•
1.5+1.5+1.8+5.0+5.0	•
1.5+1.5+2.5+2.5+2.5	•
1.5+1.5+2.5+2.5+3.5	•

Model : Outdoor Unit	RAM-90NP5E
Cooling Capacity (kW)	8.5
<b>Five Units Cont.</b>	
1.5+1.5+2.5+2.5+4.2	•
1.5+1.5+2.5+2.5+5.0	•
1.5+1.5+2.5+2.5+6.0	•
1.5+1.5+2.5+3.5+3.5	•
1.5+1.5+2.5+3.5+4.2	•
1.5+1.5+2.5+3.5+5.0	•
1.5+1.5+2.5+3.5+6.0	•
1.5+1.5+2.5+4.2+4.2	•
1.5+1.5+2.5+4.2+5.0	•
1.5+1.5+2.5+5.0+5.0	•
1.5+1.5+3.5+3.5+3.5	•
1.5+1.5+3.5+3.5+4.2	•
1.5+1.5+3.5+3.5+5.0	•
1.5+1.5+3.5+4.2+4.2	•
1.5+1.8+1.8+1.8+1.8	•
1.5+1.8+1.8+1.8+2.5	•
1.5+1.8+1.8+1.8+3.5	•
1.5+1.8+1.8+1.8+4.2	•
1.5+1.8+1.8+1.8+5.0	•
1.5+1.8+1.8+1.8+6.0	•
1.5+1.8+1.8+2.5+2.5	•
1.5+1.8+1.8+2.5+3.5	•
1.5+1.8+1.8+2.5+4.2	•
1.5+1.8+1.8+2.5+5.0	•
1.5+1.8+1.8+2.5+6.0	•
1.5+1.8+1.8+3.5+3.5	•
1.5+1.8+1.8+3.5+4.2	•
1.5+1.8+1.8+3.5+5.0	•
1.5+1.8+1.8+3.5+6.0	•
1.5+1.8+1.8+4.2+4.2	•
1.5+1.8+1.8+4.2+5.0	•
1.5+1.8+1.8+4.2+6.0	•
1.5+1.8+1.8+5.0+5.0	•
1.5+1.8+2.5+2.5+2.5	•
1.5+1.8+2.5+2.5+3.5	•
1.5+1.8+2.5+2.5+4.2	•
1.5+1.8+2.5+2.5+5.0	•
1.5+1.8+2.5+2.5+6.0	•
1.5+1.8+2.5+3.5+3.5	•
1.5+1.8+2.5+3.5+4.2	•
1.5+1.8+2.5+3.5+5.0	•
1.5+1.8+2.5+3.5+6.0	•
1.5+1.8+2.5+4.2+4.2	•
1.5+1.8+2.5+4.2+5.0	•
1.5+1.8+3.5+3.5+3.5	•
1.5+1.8+3.5+3.5+4.2	•
1.5+1.8+3.5+3.5+5.0	•
1.5+1.8+3.5+4.2+4.2	•

# MultiZone Combinations

Model : Outdoor Unit	RAM-90NP5E
Cooling Capacity (kW)	8.5
<b>Five Units Cont.</b>	
1.5+2.5+2.5+2.5+2.5	•
1.5+2.5+2.5+2.5+3.5	•
1.5+2.5+2.5+2.5+4.2	•
1.5+2.5+2.5+2.5+5.0	•
1.5+2.5+2.5+2.5+6.0	•
1.5+2.5+2.5+3.5+3.5	•
1.5+2.5+2.5+3.5+4.2	•
1.5+2.5+2.5+3.5+5.0	•
1.5+2.5+2.5+4.2+4.2	•
1.5+2.5+3.5+3.5+3.5	•
1.5+2.5+3.5+3.5+4.2	•
1.5+3.5+3.5+3.5+3.5	•
1.8+1.8+1.8+1.8+1.8	•
1.8+1.8+1.8+1.8+2.5	•
1.8+1.8+1.8+1.8+3.5	•
1.8+1.8+1.8+1.8+4.2	•
1.8+1.8+1.8+1.8+5.0	•
1.8+1.8+1.8+1.8+6.0	•
1.8+1.8+1.8+2.5+2.5	•
1.8+1.8+1.8+2.5+3.5	•
1.8+1.8+1.8+2.5+4.2	•
1.8+1.8+1.8+2.5+5.0	•
1.8+1.8+1.8+2.5+6.0	•
1.8+1.8+1.8+3.5+3.5	•
1.8+1.8+1.8+3.5+4.2	•
1.8+1.8+1.8+3.5+5.0	•
1.8+1.8+1.8+3.5+6.0	•
1.8+1.8+1.8+4.2+4.2	•
1.8+1.8+1.8+4.2+5.0	•
1.8+1.8+1.8+5.0+5.0	•
1.8+1.8+2.5+2.5+2.5	•
1.8+1.8+2.5+2.5+3.5	•
1.8+1.8+2.5+2.5+4.2	•
1.8+1.8+2.5+2.5+5.0	•
1.8+1.8+2.5+2.5+6.0	•
1.8+1.8+2.5+3.5+3.5	•
1.8+1.8+2.5+3.5+4.2	•
1.8+1.8+2.5+3.5+5.0	•
1.8+1.8+2.5+4.2+4.2	•
1.8+1.8+2.5+4.2+5.0	•
1.8+1.8+3.5+3.5+3.5	•
1.8+1.8+3.5+3.5+4.2	•
1.8+1.8+3.5+4.2+4.2	•
1.8+2.5+2.5+2.5+2.5	•
1.8+2.5+2.5+2.5+3.5	•
1.8+2.5+2.5+2.5+4.2	•
1.8+2.5+2.5+2.5+5.0	•
1.8+2.5+2.5+2.5+6.0	•

Model : Outdoor Unit	RAM-90NP5E
Cooling Capacity (kW)	8.5
<b>Five units cont.</b>	
1.8+2.5+2.5+3.5+3.5	•
1.8+2.5+2.5+3.5+4.2	•
1.8+2.5+2.5+3.5+5.0	•
1.8+2.5+2.5+4.2+4.2	•
1.8+2.5+3.5+3.5+3.5	•
1.8+2.5+3.5+3.5+4.2	•
2.5+2.5+2.5+2.5+2.5	•
2.5+2.5+2.5+2.5+3.5	•
2.5+2.5+2.5+2.5+4.2	•
2.5+2.5+2.5+2.5+5.0	•
2.5+2.5+2.5+3.5+3.5	•
2.5+2.5+2.5+3.5+4.2	•
2.5+2.5+3.5+3.5+3.5	•

## temperzone Australia Pty Ltd

### ENQUIRIES

[sales@temperzone.com.au](mailto:sales@temperzone.com.au)

### AUSTRALIA

Sydney: (02) 8822 5700  
Melbourne: (03) 8769 7600  
Brisbane: (07) 3308 8333  
Adelaide: (08) 8115 2111

### DISTRIBUTORS

Newcastle: (02) 4962 1155  
Perth: (08) 6399 5900  
Launceston: (03) 6331 4209

### NEW ZEALAND

Auckland: (09) 279 5250  
Wellington: (04) 569 3262  
Christchurch: (03) 379 3216



### WARRANTY

Must be maintained in accordance with maintenance recommendations.

[hitachiaircon.com.au](http://hitachiaircon.com.au)

[hitachiaircon.co.nz](http://hitachiaircon.co.nz)



The specifications of this catalogue may change without prior notice to allow Hitachi Cooling & Heating to incorporate the latest innovations for its customers. The information contained in this catalogue is merely informative. Hitachi Cooling & Heating declines any responsibility in the broadest sense, for damage, direct or indirect, arising from the use and / or interpretation of the recommendations in this catalogue.